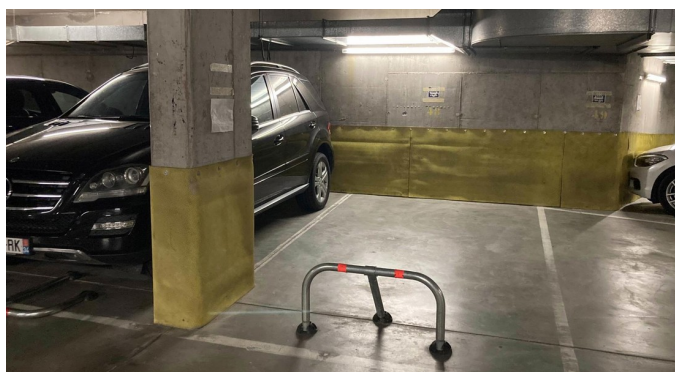
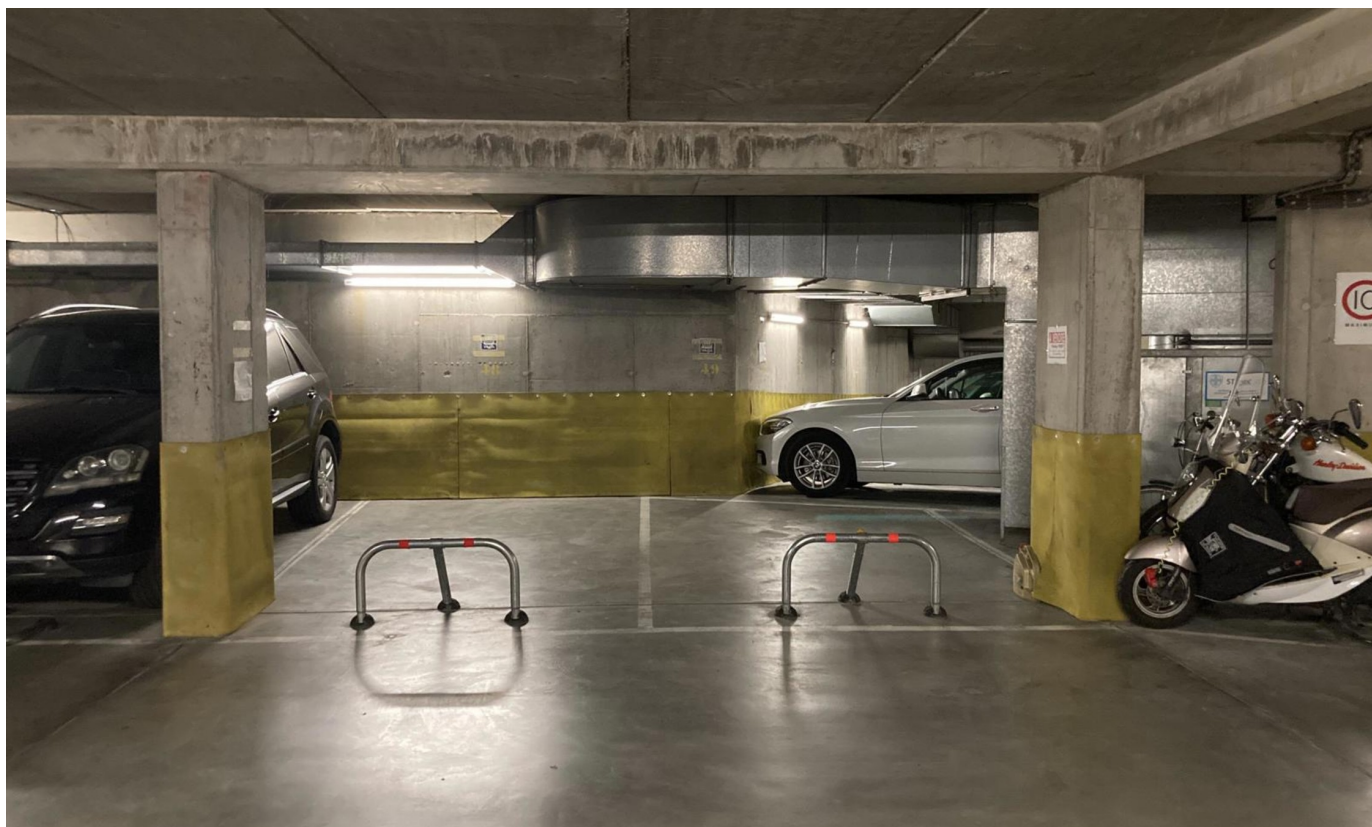


Inside parking for sale

Avenue Jean Monnet 2-12 1200 Woluwe-Saint-Lambert

€ 18.000



Description

CORA area - In a building complex located Avenue de Calabre and Jean Monnet, a parking space with a depth of +/-5m and width of +/-2.40m, secured with a folding parking barrier - Electric access door to the basement - Possibility of buying 4 spaces in this car park.

Details

General information	In the proximity	Financial
Construction year 1994	Shops nearby Yes	Price € 18.000
State Good state	School nearby Yes	Land registry income € 141
Garage Yes	Public transport nearby Yes	VAT applied No
Parking inside Yes		Reference Monnet 2 - Emplacement de parking
Parkings inside 2		Available At the contract 01 January 2023
		Spatial planning
		Destination Not disclosed
		Building permission Not disclosed
		Intimation Not disclosed
		Parcelling permission Not disclosed
		Right of pre-emption Not disclosed