


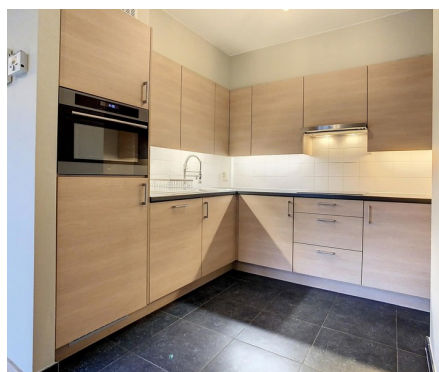


Duplex for rent

Leuvensesteenweg 288 03 1950 Kraainem

€ 1.195

 2  2  82 m²



Description

SINT-STEVENS-WOLUWE - At the limit with Kraainem - Pleasant duplex apartment on the 3rd floor of a building with elevator. The duplex consists of an entrance hall, toilet, bright living room of +/-30m2 with super-equipped American kitchen and access to terrace. The upper floor consists of 2 bedrooms of respectively +/-13,5m2 and +/-11m2, one with a shower and one with a bathroom, separate toilet. Electric blinds, safety door, new individual heating (gas - condensation), cellar and underground parking place - Provision for monthly charges: 130€ (common, water). Convenient location close to major roads, public transport (bus 42/318/410/659) and shops, in a quiet street away from traffic. AVAILABLE 15/04/26 - Not to be missed!

Details

General information

Construction year
2008

State
Very good state

Floor
3

Floors
4

Parking inside
Yes

Parkings inside
1

Layout

Living room
30 m²

Kitchen
US hyper equipped

Bedroom 1
14 m²

Bedroom 2
11 m²

Bathroom
shower and bath tub

Shower rooms
2

Toilets
2

Cellar
Yes

In the proximity

Environment
Residential area

Shops at
100 m

School at
5.000 m

Public transport at
50 m
1.000 m

Dimensions

Habitable surface
82 m²

Surface main building
92 m²

Comfort

Handicap friendly
No

Parlophone
Yes

Elevator
Yes

Security door
Yes

Pool
No

Energy

EPC
101 kWh/m²

CO2 emission
1782kg CO2/m²

Glazing type
Thermic and acoustic isol.

Windows
Aluminium

Electricity certificate
Yes, conform

Heating type
Gas

Heating
Individual

Financial

Price
€ 1.195 per month

Costs
€ 130 monthly

Reference
Louvain 288/03

Available
Tbd with the tenant

Spatial planning

Flooding area
Flood area